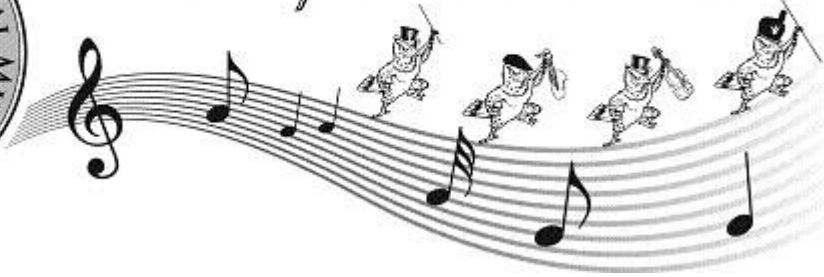




Pennsbury Instrumental Music



Pennsbury High School

Ninth Grade Band
Concert Band
Concert Orchestra
Symphonic Winds
Symphonic Orchestra
Symphony Orchestra

Syllabus

2017-2018

Mr. Bygott
Mr. Carpino
Mrs. Chippendale
Mr. Mazzeo
Mr. Randle
Ms. Reilly

Directors

Instrumental Music Syllabus 2017-18

Table of Contents

2.....	Table of Contents
3.....	Mission Statement/Philosophy
4.....	Class Expectations
5.....	Rehearsal and Performance Etiquette
6.....	Grading System
7.....	Performances
8.....	Concert Attire
9.....	Lesson Requirements
10.....	Lesson Objective/Self-Assessment Form
11.....	Policy for Student Seating Challenges
12.....	Parent and Student Signature

Mission Statement

“The Pennsbury Instrumental Music Department, a student-centered learning community, will prepare each member to achieve his or her highest potential and to demonstrate skills and talents necessary for quality of life by providing a musically diverse program with the involvement and support of families and community.”

Philosophy

“We believe that Instrumental Music Education at Pennsbury should provide opportunities for all children to develop as individuals – musically, intellectually, aesthetically, socially, physically, and morally.

We believe also that the Instrumental Music Department, in concert with the home and community, must develop and maintain programs that help children learn skills, extend positive experiences, and make responsible choices concerning their future roles as contributing members of a democratic society.

Finally, we believe that music education should stimulate the desire for learning as a continuing, life-long process.”

Class Expectations

1. You are in your seat, prepared with all equipment – music, pencil, instrument, etc. – and warmed up 5 minutes from the start of the period. A Period will begin at 7:25 am, D Period will begin at 12:50pm.
2. Students must get their own chair and music stand off the racks for each rehearsal. Students must neatly return their own chair and music stand to the racks at the end of each rehearsal.
3. There are no refreshments, food, drink, gum, etc., cards, games, hacky sacks, makeup, cell phones, iPods, handheld video permitted ever or anything that the Director feels is derogatory towards a positive rehearsal.
4. You are quiet during attendance.
5. Instruments will be stored in designated areas.
6. Flute, oboe, clarinet, alto saxophone, trumpet, English horn, bassoon, violin and viola cases will be stored under your chair during rehearsal. French horn, tenor sax, baritone sax, euphonium, trombone, tuba, bass and cello cases will be stored in designated areas during rehearsal.
7. Proper concert and rehearsal etiquette is applied at all times. You are being graded on it!
8. Class is dismissed at the discretion of the Director.
9. Students are responsible to maintain a current Diatonic packet.
10. Self-assessment is a significant part of your music education and development. Students will be required to complete the self-assessment form at the bottom of the objective form directly following each lesson and submit it to their teacher. Students will also be asked to create a written evaluation and assessment on their own and the other ensembles' performances.
11. Students are responsible to maintain all equipment and have it in playing condition at all times. A non-working or functioning instrument is not an excuse for lack of participation.
12. Students who are using a Pennsbury owned instrument or equipment are held accountable for and are responsible for that instrument. Students who share a Pennsbury owned instrument or equipment may be assessed a fee for misuse or mistreatment beyond normal wear and tear as assessed by our repair vendor.
13. Bathroom procedure: Students may use the bathroom at any time. One student at a time may use the bathroom. All students must sign the bathroom sign-out/sign-in sheet and use the designated hall pass.
14. In addition to the classroom, memos, announcements, instructions, and other related materials will be communicated through Google classroom and Remind Me app and the Pennsbury Instrumental Website: www.pimdept.org. You must sign up on Google Classroom and Remind-Me and be familiar with the Pennsbury Instrumental Music Website. It is the student's responsibility to obtain the information on these websites in order to be successful in this class.

Rehearsal Etiquette

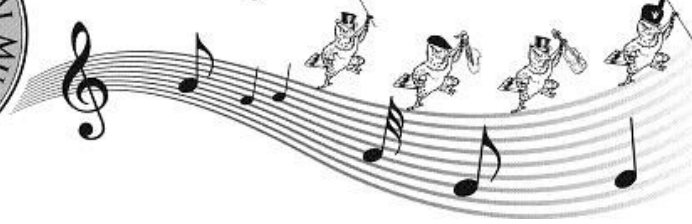
1. Talking during rehearsal is not allowed without raising your hand and being called on.
2. Adjust your music stand and chair so that you can see your music and conductor at the same time.
3. There is no editing of any music unless approved by one of your directors. Write in your music with No. 2 pencil only.
4. Even when the conductor is rehearsing another group of instruments, it is imperative that you are silent and listen. Use that moment to think about how your part fits in the ensemble as well as the directions your colleagues are receiving. How does this information pertain to you?
5. Follow the bathroom procedure listed on the previous page.
6. You are to sit in your assigned seat unless instructed otherwise by your conductor.
7. Due to the number of percussionists, it is necessary to “platoon” the section. All students are to be prepared to play all percussion parts.
8. It is expected that specific notes, articulations, and dynamics given by the conductor be written into the music with No. 2 pencil only.
9. Students are to have their own folders and copies of music at every rehearsal.
10. Students are to have a pencil at every rehearsal.
11. Instruments are to be in working order at all times.

Performance Etiquette

1. There is absolutely no talking on stage.
2. Students are expected to wear the appropriate concert attire as listed on page 8 of this syllabus.
3. Out of respect to all performers, no student is permitted to leave the performance early.
4. Turn off all cell phones and electronic devices.
5. When you are in the audience you will follow proper concert etiquette.



Pennsbury Instrumental Music



GRADING SYSTEM

2017-2018 School Year

Instrumental Music Grading Rationale

“The Pennsbury Instrumental Music Curriculum is based on two components: ensemble and individual instruction. The Pennsbury Instrumental Music Department perceives all performances as an assessment to the ensemble component of the curriculum. The Pennsbury Instrumental Music Department perceives lessons as an assessment to the individual instruction component of the curriculum.”

Your quarterly marking period grade will be assessed as follows:

- 20%- Lesson 1
- 20%- Lesson 2
- 20%- Performance Assessments
- 40%- Performances

Your lessons need to be completed by the following dates (weather permitting):

- Marking Period 1- Lesson #1– Oct. 6, 2017; Lesson #2– Nov. 3, 2017
- Marking Period 2- Lesson #1– Dec. 11, 2017; Lesson #2- Jan. 22, 2018
- Marking Period 3- Lesson #1– Feb. 28, 2018 ; Lesson #2– April 5, 2018
- Marking Period 4- Lesson #1– May 4, 2018; Lesson #2– June 5, 2018

Your end of the year final grade will be determined as follows:

- 40% first semester grade
- 40% second semester grade
- 10% Written Midterm Assessment
- 10% Written Final Assessment

Students will have the opportunity to retake the Mid Common Assessment until the time allotted. Students will have the opportunity to make up lessons for the previous marking period with the following stipulations:

- 1.) Students have to schedule the missed quarter’s make-up lesson in addition to the next quarter’s lessons and may not use make up lessons as that quarter’s lesson.
- 2.) First quarter make up lessons will conclude at the close of the second quarter.
- 3.) Second quarter make up lessons will conclude at the close of the third quarter.
- 4.) Third quarter make up lessons will conclude at the close of the fourth quarter.

PERFORMANCES

Symphonic/Symphony Orchestra	Concert Orchestra
<ul style="list-style-type: none"> • December 14, 2017- PHS Orchestra Winter Concert, 7pm @ PHS E • April 27, 2018- Pennsbury Symphony Orchestra Festival- 6pm @ PHS E • May 7, 2018- 6th Annual PHS Orchestra Festival, 7pm @ PHS E 	<ul style="list-style-type: none"> • December 14, 2017- PHS Orchestra Winter Concert, 7pm @ PHS E • April 27, 2018- Pennsbury Symphony Orchestra Festival- 6pm @ PHS E • May 7, 2018- 6th Annual PHS Orchestra Festival, 7pm @ PHS E
9th Grade Band	Concert Band
<ul style="list-style-type: none"> • December 18, 2017- PHS Band Winter Concert, 7pm @ PHS E • May 14, 2018- 10th Annual Pennsbury Band Festival, 7pm @ Trenton War Memorial 	<ul style="list-style-type: none"> • December 18, 2017- PHS Band Winter Concert, 7pm @ PHS E • May 14, 2018- 10th Annual Pennsbury Band Festival, 7pm @ Trenton War Memorial
Symphonic Winds	
<ul style="list-style-type: none"> • December 14, 2017- PHS Orchestra Winter Concert, 7pm @ PHSE (Symphony winds and percussion) • December 18, 2017- PHS Band Winter Concert, 7pm @ PHSE • April 27, 2018- Pennsbury Symphony Orchestra Festival- 6pm @ PHSE (Symphony winds and percussion) • May 7, 2018- 6th Annual PHS Orchestra Festival, 7pm @ PHSE (Symphony winds and percussion) • May 14, 2018- 10th Annual Pennsbury Band Festival, 7pm @ Trenton War Memorial • June 12, 2018 (Tentative) Graduation (Symphonic Winds 2018-19) <p>Please note the Symphony Orchestra dates if you are in Symphony Orchestra.</p>	

* The concerts are a performance midterm and final assessments and henceforth attendance at the entire concert is required. Students will be asked to create a written evaluation and assessment on their own and the other ensembles' performances.

It is mandatory for principal and associate players of the Pennsbury Symphonic Winds to participate in the Pennsbury Symphony Orchestra. If you fail to attend a Symphony Orchestra performance, your seat in Symphonic Winds will be altered accordingly and your grade may be affected.

CONCERT ATTIRE

PHS 9th Grade Band Attire

Ladies: Black pants/long skirt below the knees with WHITE blouse and black dress shoes. Blouse should be no shorter than $\frac{3}{4}$ length sleeve.

Men: Black pants with a white dress shirt and tie and black dress shoes.

PHS Concert Band Attire

Ladies: Black pants/long skirt below the knees with BLACK blouse and black dress shoes. Blouse should be no shorter than $\frac{3}{4}$ length sleeve.

Men: Black pants with a black dress shirt and black dress shoes.

PHS Symphonic Winds Attire

Ladies: Black shoes, black socks and a black t-shirt under the Marching Band uniform.

Men: Black shoes, black socks and a black t-shirt under the Marching Band uniform.

*In addition, students may be asked to wear concert black for casual performances.

PHS Concert Orchestra Attire

Ladies: Black pants/long skirt below the knees with BLACK blouse and black dress shoes. Blouse should be no shorter than $\frac{3}{4}$ length sleeve.

Men: Black pants with a black button down dress shirt and black dress shoes.

PHS Symphonic Orchestra Attire

Ladies: Black pants/long skirt below the knees with WHITE blouse and black dress shoes. Blouse should be no shorter than $\frac{3}{4}$ length sleeve.

Men: Black Suit with a white dress shirt and tie (preferably black) and black dress shoes.

PHS Symphony Orchestra Attire

Ladies: Black pants/long skirt below the knees with WHITE blouse and black dress shoes. Blouse should be no shorter than $\frac{3}{4}$ length sleeve.

Men: Black Suit with a white dress shirt and tie (preferably black) and black dress shoes.

Lesson Requirements and Procedures

1. It is required that you attend two (2) lessons per quarter. Seniors are exempt from the 4th Quarter, but may be asked to play their concert repertoire.
2. Each student will be assigned two lessons per quarter. The first lesson must be completed during the first 4-5 weeks of each quarter. **It is the student's responsibility to reschedule their lesson if they have a conflict.** It is the students' responsibility to fill out a lesson trade form signed with both students' signatures on the trade form. A Lesson Schedule will be placed on the board outside of Mr. Mazzeo's office. You have up until noon on Wednesday of the prior week to verify your Lesson Appointment Schedule.
3. You may not schedule a lesson during your curricular ensemble period.
4. **You** must inform your classroom teacher prior to your signup that you will be missing part of your class. All students are responsible for making up their missed work during that class.
5. **Prior to your lesson**, you are required to fill out a lesson objective form and bring the form to your lesson. **Upon completion of the lesson**, you are required to complete a self-assessment form.
6. Since lessons are only 15 minutes long, you must be punctual, warmed up, and have all materials ready.

Students will have the opportunity to make up lessons for the previous marking period with the following stipulations:

- 1.) Students have to schedule the missed quarter's make-up lesson in addition to the next quarter's lessons and may not use make up lessons as that quarter's lesson.
- 2.) First quarter make up lessons will conclude at the close of the second quarter.
- 3.) Second quarter make up lessons will conclude at the close of the third quarter.
- 4.) Third quarter make up lessons will conclude at the close of the fourth quarter

LESSON OBJECTIVE FORM

(complete **before** lesson)

Name: _____ Ensemble: _____

Quarter: _____ Lesson #: _____ Date of Lesson: _____ Time of Lesson: _____

OBJECTIVES:

1. Fundamental Proficiencies (Diatonics): _____
2. Repertoire: _____
3. Other: _____

SELF-EVALUATION FORM

(complete **after** lesson)

1. Today During My Lesson I Learned: _____

2. I need to improve on: _____
3. I feel like I improved on: _____
4. Concepts I would like to become more familiar with: _____

5. Assignment for next lesson: _____

Rate your lesson in each category on a scale of 0-5, with 5 being the highest.

	Student Assessment	Teacher Assessment
Sound	0 1 2 3 4 5	0 1 2 3 4 5
Rhythm	0 1 2 3 4 5	0 1 2 3 4 5
Interpretation	0 1 2 3 4 5	0 1 2 3 4 5
Technique	0 1 2 3 4 5	0 1 2 3 4 5
Preparation	0 1 2 3 4 5	0 1 2 3 4 5
Total (out of 25)		

Pennsbury Band and Orchestras
2017-2018

**Policy for Student Challenges for Curriculum
Band and Orchestra Members**

1. Students will be able to challenge up to two students who are seated directly ahead of them. For example Violin II chair 10 can only challenge Violin II chairs 9 & 8. ALL CHALLENGES ARE AT THE DISCRETION OF THE DIRECTOR.
2. The Director will select the music for the challenge and at least all level-one proficiencies are required. More may be added at the discretion of the Director.
3. The incumbent must wait two weeks before re-challenging.
4. If a student is successful in the challenge it may affect seating only. This will be at the discretion of the Director. Parts may remain the same but the challenge may only affect the seating.

Pennsbury Band and Orchestras

2017-2018

Parent and Student Acknowledgement

I have read the course syllabus and understand the importance of abiding by the established rules for participation and attendance as a member of a Pennsbury High School Instrumental Music Performing Ensemble and class. I will try, to the best of my ability, to fulfill these requirements and be a productive and contributing member.

_____ / ____ / ____
(Print student name) (Student signature) (Date)

I have discussed the information presented in this document with my child. I will try, to the best of my ability, to assure that my child fulfills the requirements as a productive and contributing member of their Pennsbury High School Instrumental Music Performing Ensemble(s) and class. I assure that my child will attend all concerts listed in this course syllabus.

_____ / ____ / ____
(Parent or Guardian signature) (Date)

Please check all that apply.

Grade:

9th Grade 10th Grade 11th Grade 12th Grade

Performing Ensemble(s):

9th Grade Band Concert Band Symphonic Winds

Concert Orchestra Symphonic Orchestra Symphony Orchestra

This form must be signed and returned to your Instrumental Music Director by September 20, 2017